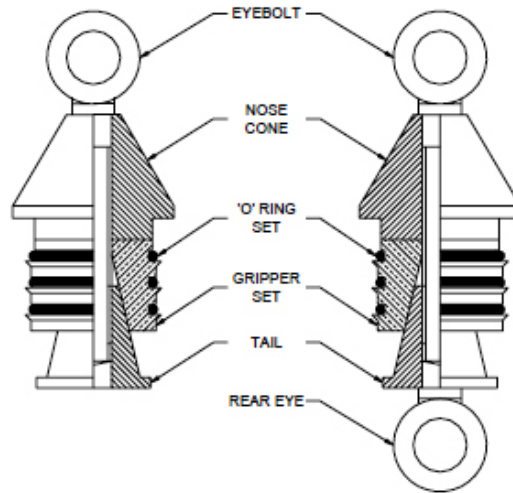


Towing Heads

Standard



- Simple and quick to fit / remove
- Reliable
- Works over a range of SDRs
- Fully reusable
- Extensive size range
- Robust construction
- Quality manufactured

- Other Main Types
- Available on Request
- Standard
- Standard with rear eye
- Pressure tight
- PE Coiler

All towing heads are manufactured to a high specification using food quality steels and aluminium. They are zinc plated for corrosion protection.

The standard towing head is best suited to general pipe pulling operations such as slip lining and pipe uncoiling, as they do not fully seal the pipe against the ingress of fluids and fine particles.

Each size of standard towing head is designed to work over a range of wall thicknesses for a given pipe size, usually SDR 11 to 17.6, but other ranges are available.

They are manufactured to suit all types and makes of plastic pipe in the size range 16mm (12") to 630mm (24").

The Standard towing head has undergone a comprehensive series of tensile tests to ensure that in general the pipe will fail before the towing head.

The towing head is simply fitted onto the end of a pipe and secured by rotating the pulling eye until tight. No special tools are required.