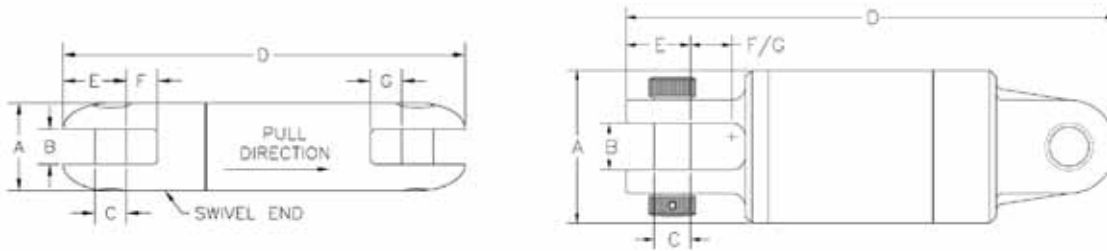
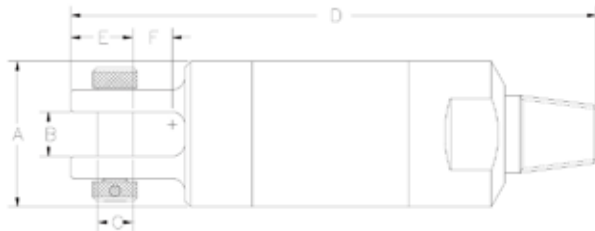


Swivel



3:1 Safe Working Load	Ultimate Load	A	B	C	D	E	F	G	Weight
8,500 LB	25,500 LB	2"	3/4"	11/16"	8-3/4"	1-3/8"	5/8"	3/4"	5.0 LB
10,000 LB	30,000 LB	2-1/4"	7/8"	3/4"	9-5/8"	1-1/2"	3/4"	7/8"	7.0 LB
15,000 LB	45,000 LB	2-1/2"	1"	7/8"	11-1/4"	1-3/4"	7/8"	1"	10.1 LB
20,000 LB	60,000 LB	2-1/2"	1"	7/8"	11-7/8"	1-3/4"	7/8"	1"	10.7 LB
30,000 LB	90,000 LB	3"	1-5/16"	1-1/8"	14"	2-1/4"	1-1/8"	1-1/4"	17.3 LB
40,000 LB	120,000 LB	4-3/4"	1-3/4"	1-1/8"	16-1/2"	2-1/16"	1-7/16"	N/A	49.0 LB
60,000 LB	180,000 LB	5-3/4"	1-3/4"	1-3/8"	18-1/4"	2-1/2"	1-7/16"	N/A	76.0 LB
90,000 LB	270,000 LB	6"	1-3/4"	1-3/8"	19-3/8"	2-1/2"	1-7/16"	N/A	88.0 LB

Rebuild & Pin Kits available.



3:1 Safe Working Load	Ultimate Load	Male Pin Threads	A	B	C	D	E	F	Weight
10,000 LB	30,000 LB	2" IF API	2-1/2"	7/8"	3/4"	11-5/16"	1-1/2"	3/4"	9.9 LB
20,000 LB	60,000 LB	2" IF API	2-1/2"	1"	7/8"	12-11/16"	1-3/4"	7/8"	12.6 LB
20,000 LB	60,000 LB	2-3/8" REG API	3-1/4"	1"	7/8"	13-7/8"	1-3/4"	7/8"	13 LB
30,000 LB	90,000 LB	2-3/8" REG API	3-1/4"	1-5/16"	1-1/8"	15"	2-1/4"	1-1/8"	20.8 LB
40,000 LB	120,000 LB	2-3/8" REG API	4-3/4"	1-3/4"	1-1/8"	17-1/2"	2-1/16"	1-7/16"	55 LB
60,000 LB	180,000 LB	2-7/8" IF API	5-3/4"	1-3/4"	1-3/8"	19-9/16"	2-1/2"	1-7/16"	88 LB
90,000 LB	270,000 LB	2-7/8" IF API	6"	1-3/4"	1-3/8"	20-3/4"	2-1/2"	1-7/16"	100 LB

Clevis / Pin

Swivels allow a pin connection to the reamer or hole-opener before the swivel. We offer a range of types and threaded connections, which are listed in the chart. The rigid connection type promotes a more direct pushback, but also places more load on the swivel.